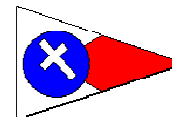


SANTA CRUZ YACHT CLUB
2009 SPRING SCORE / DOUBLE HANDED SERIES
SAILING INSTRUCTIONS



244 Fourth Avenue, Santa Cruz, CA 95062, (831) 425-0690, fax (831) 425-7032, info@scyc.org

1. Rules

- 1.1 This series will be governed by the rules as defined in the *Racing Rules of Sailing*, the 2008-2009 SCYC Minimum Equipment Requirements (MER) as they apply to category 3 races for PHRF and category 4 races for the Double Handed division.
- 1.2 All competitors are required to wear personal flotation devices while racing, regardless of whether or not the “Y” flag is displayed. This changes RRS 40.
- 1.3 RRS 62.1(a) is changed as per Sailing Instruction 7.
- 1.4 RRS 35, A4 and A5 are changed as per Sailing Instruction 9.
- 1.5 RRS A2 is changed as per Sailing Instruction 10.

2. Entries and Eligibility

- 2.1 Eligible boats may register by completing the 2009 SCYC Entry Form and presenting it, together with the required entry fee to the race committee. Early entries (\$55) are due at SCYC by 1800 April 24, 2009. Regular entries (\$65) will be accepted at the SCYC Club House between 1000 and 1025 hours on April 26, 2009, between 1000 and 1025 on May 24, 2009 and between 1000 and 1025 on June 28, 2009.
- 2.2 Eligibility requirements and divisions are specified in the Notice of Race.

3. Notices to Competitors, Signals Made Ashore

- 3.1 A Competitors meeting is scheduled at the SCYC clubhouse for Sunday, April 26, 2009, at 1030 hrs.
- 3.2 Notices to competitors will be posted on the SCYC Official Notice Board, located in the window opposite the bar at the northeast corner of the SCYC clubhouse.
- 3.3 Signals made ashore will be displayed from the yardarm of the mast on the SCYC clubhouse deck. If a postponement is signaled ashore, the warning signal will be made not less than sixty minutes (60) after AP is lowered.
- 3.4 Changes to the Sailing Instructions, if any, will be posted no later than 1130 hours.
- 3.5 On the water the Race Committee may use VHF channel 68 for communication.

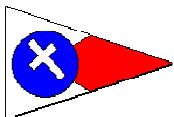
4. Schedules and Class Flags

- 4.1 Two races are scheduled each of the following race days:

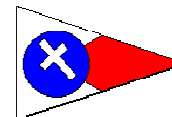
Sunday, April 26, 2009	Sunday, May 24, 2009	Sunday, June 28, 2009
------------------------	----------------------	-----------------------

- 4.2 The first Warning signal is scheduled for 1225hrs.
- 4.3 The second race for each division will follow shortly after the last finish in each division or after the expiration of the time limit.

Division	MBYRA PHRF Rating Band	Class Letter & Flag
A – Spinnaker	90 or below	F
B – Spinnaker	Above 91	E
DH – Double Handed	All PHRF	D
Multihull	BAMA	G
Jib & Main	PHRF < 182	H
Jib & Main	PHRF > 181	J



SANTA CRUZ YACHT CLUB
2009 SPRING SCORE / DOUBLE HANDED SERIES
SAILING INSTRUCTIONS



244 Fourth Avenue, Santa Cruz, CA 95062, (831) 425-0690, fax (831) 425-7032, info@scyc.org

5. Courses, Race Area

- 5.1 Course numbers will be signaled with numeral pennants from the RC boat. Courses and signals are described in Appendix A.
- 5.2 Racing will be around buoy enclosed courses between Capitola and Natural Bridges.

6. Marks

Name	Description	Latitude	Longitude
S/F	Unmarked yellow ball	36°57.129' N	121°59.748' W
NB	Unmarked yellow ball	36°56.581' N	122°03.674' W
Wharf	Unmarked yellow ball	36°56.873' N	122°01.244' W
Gov	Unmarked white/ blue ball	36°57.470' N	122°00.720' W
Mile	Red/White whistle buoy marked: SC A	36°56.349' N	122°00.563' W
Black	Unmarked yellow ball	36°57.366' N	121°59.197' W
SC2	Yellow cylinder marked SC 2	36°56.579' N	121°59.280' W
SC3	Yellow cylinder marked SC 3	36°56.493' N	121°58.015' W
SC5	Yellow cylinder marked SC 5	36°54.998' N	121°59.996' W
SC7	Yellow cylinder marked SC 7	36°56.780' N	122°01.662' W
W	Inflatable Orange Tetrahedron		
L	Inflatable Yellow Tetrahedron		

7. The Starting and Finishing Lines,

- 7.1 The starting line will be between a staff displaying an orange flag on the race committee signal boat and mark S/F.
- 7.2 The finish line will be between a staff displaying an orange flag on a committee signal boat and mark S/F. An orange ball may replace the committee boat if the RC boat is not on station.
- 7.3 After the starting signal, the race committee may hail the sail number(s) of the boat(s) identified on the course side of the starting line by loud hail and/or VHF radio. The failure of a hail, the failure of a boat to hear a hail or the order of the hails shall not be ground for redress. This alters RRS 62.1(a)
- 7.4 Between a boat's preparatory signal and her start, she shall not hoist any part of her spinnaker higher than the main-boom gooseneck.

8. Boat retiring before the finish

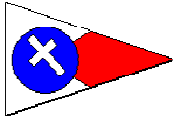
- 8.1 A boat retiring before finishing a race shall notify the RC as soon as reasonably possible.

9. Time Limit

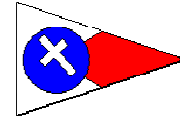
- 9.1 Boats having not finished within 30 minutes of the first boat in her class to finish and comply with RRS 28.1 will be scored DNF. This changes RRS 35. A4 and A5.

10. Scoring

- 10.1 A total of six (6) races are scheduled for the series.
- 10.2 A minimum of four races constitutes a series.
- 10.3 If less than five races are completed, there will be no throwouts. When five or more races are completed, a boat's series score will be the total of her race scores excluding her worst score. This changes RRS Appendix A2.



SANTA CRUZ YACHT CLUB
2009 SPRING SCORE / DOUBLE HANDED SERIES
SAILING INSTRUCTIONS



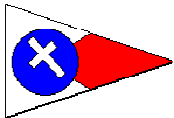
244 Fourth Avenue, Santa Cruz, CA 95062, (831) 425-0690, fax (831) 425-7032, info@scyc.org

11. Protests

- 11.1 Protest forms will be available at the SCYC regatta shed. Protests and requests for redress shall be lodged with the race committee within 60 minutes after the docking of the Race committee signal boat. This time limit will be posted on the official regatta notice board.
- 11.2 The time and place of all protest hearing(s), the boat(s) protesting, the boat(s) being protested and boat(s) requesting redress will be posted on the official regatta notice board within 120 minutes after the docking of the race committee signal boat. This shall serve as notification as per RRS 63.2.

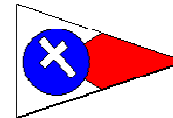
12. Prizes

- 12.1 Prizes will be given at the discretion of the Organizing Authority.
- 12.2 Winners of divisions with three or more entries in the series will be eligible for the Champion of Champions Regatta.



SANTA CRUZ YACHT CLUB

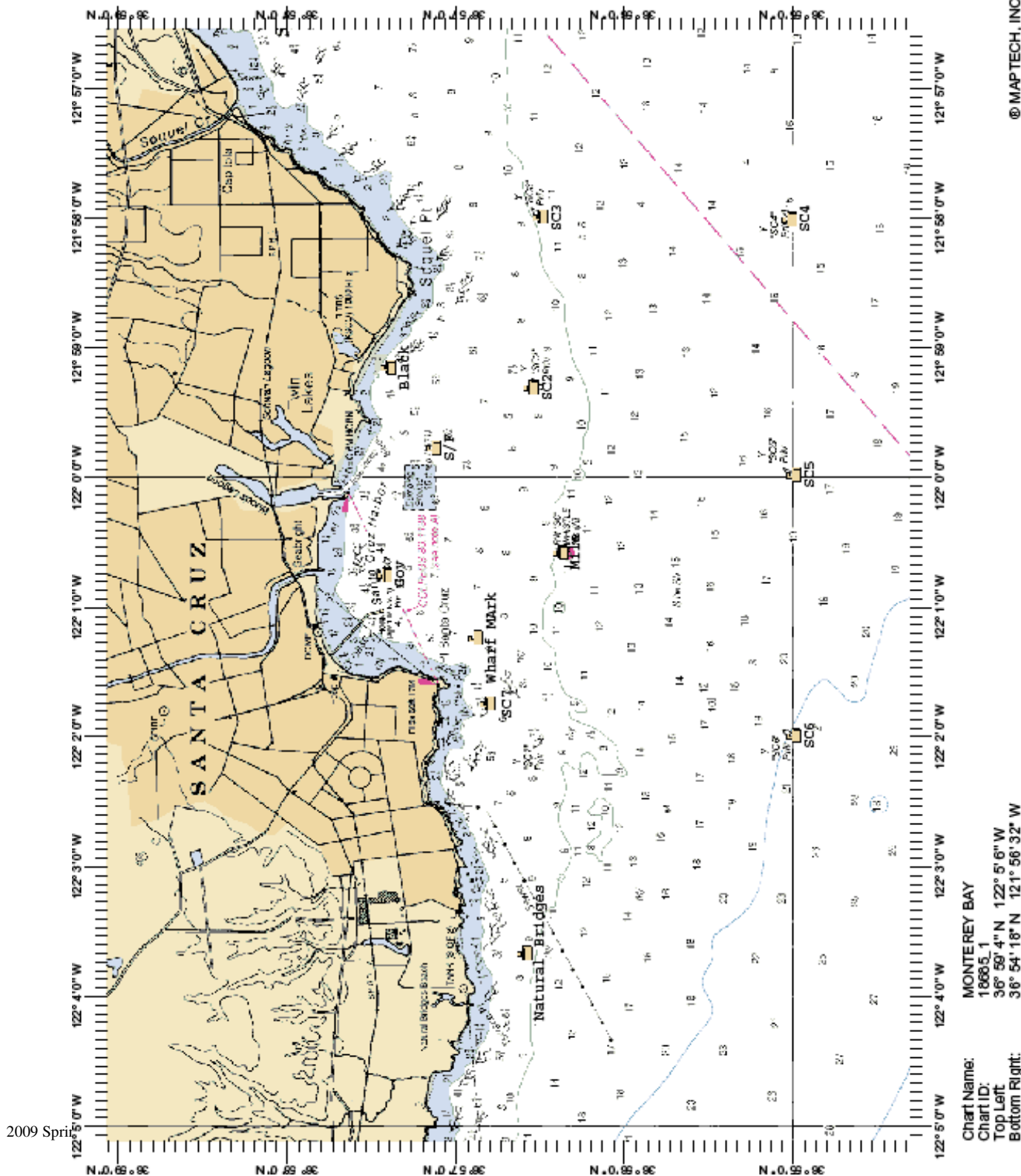
2009 SPRING SCORE / DOUBLE HANDED SERIES



SAILING INSTRUCTIONS

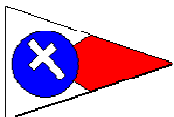
244 Fourth Avenue, Santa Cruz, CA 95062, (831) 425-0690, fax (831) 425-7032, info@scyc.org

APPENDIX A – RACE AREA & COURSES

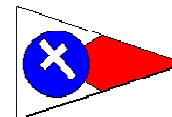


© MAPTECH, INC.

Chart Name: MONTEREY BAY
 Chart ID: 18685.1
 Top Left: 36° 59' 4" N 122° 5' 6" W
 Bottom Right: 36° 54' 18" N 121° 56' 32" W



SANTA CRUZ YACHT CLUB
2009 SPRING SCORE / DOUBLE HANDED SERIES
SAILING INSTRUCTIONS



244 Fourth Avenue, Santa Cruz, CA 95062, (831) 425-0690, fax (831) 425-7032, info@scyc.org

COURSES

p indicates a port rounding, s indicates starboard rounding

Course Number	Rounding Order	Distance nm
1	Start – NB p – SC2 p – Wharf p – Finish	9.5
2	Start – SC7 p – S/F p – SC7 p – SC2 s – SC7 p - Finish	10.1
3	Start – Wharf p – S/F p – Wharf p – SC2 p- Wharf p - Finish	8.1
4	Start – SC7 p – S/F p – SC7 p - Finish	6.3
5	Start – SC3 p – SC2 p – SC3 p – Finish	5.1
6	Start – SC3 p – Gov p – SC2 p - Finish	6.0
7	Start – SC3 p – Finish	3.1
8	Start – Wharf p – Mile p – SC2 p – Wharf p – Finish	5.9
9	Start – Wharf p – Mile p – SC3 p – Wharf p – Finish	7.9
10 (one over zero)	Start – SC7 p – Mile p – SC7 p - Finish	5.1
12 (one over two)	Start – Wharf p – S/F p – Wharf p - Finish	4.9
13 (one over three)	Start – SC5 p – Finish	4.3
14 (one over four)	Start – SC5 p – S/F p – SC5 p – Finish	8.6
15 (one over five)	Start – SC5 s – Gov s – Finish	5.5
16 (one over six)	Start – SC5 s – Gov s – S/F s – SC5 s – Gov s – Finish	11.1
17 (one over seven)	Start – W p – L p – W p – Finish	